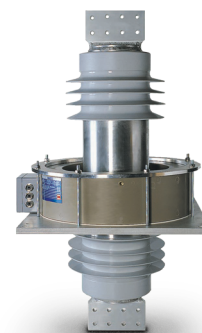
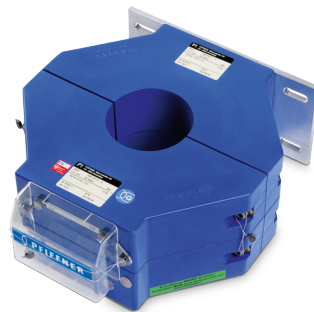
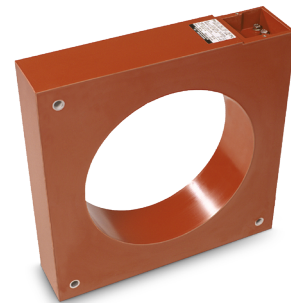


# Cable current transformers

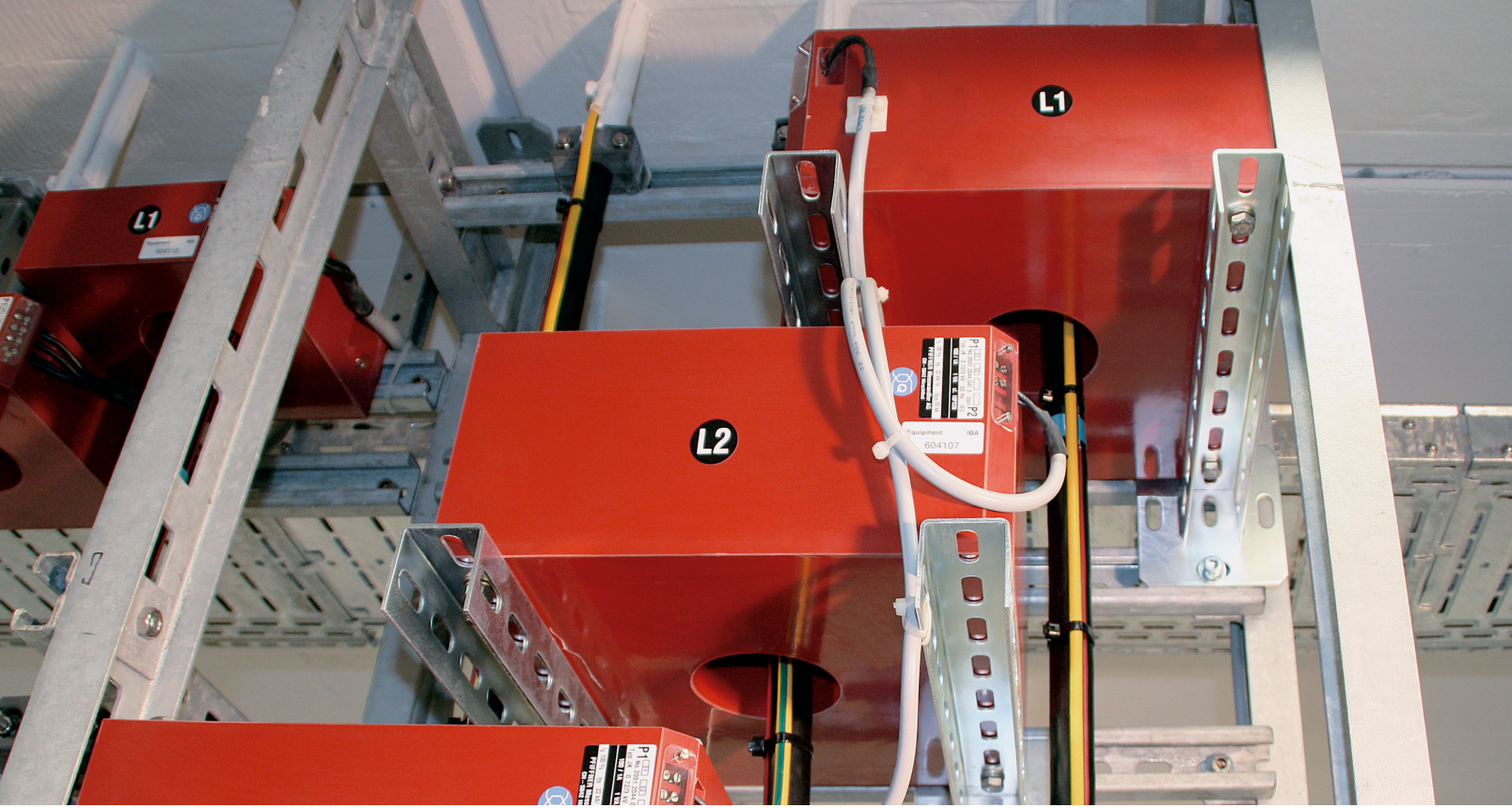
Indoor and outdoor operation

JK  
JKS / JKS-S  
JK-G / JKS-G  
JKF  
JLD



**PFIFFNER**

Current and voltage – our passion



# Current transformers JK

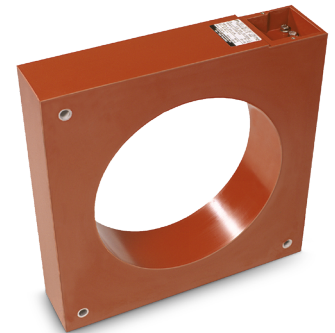
Cable current transformers type JK are used in indoor switchgear. They transform high currents up to 5000 A into standardised values for meters, measuring and protection devices.

The cable current transformer is designed for installation on fully insulated medium and high voltage cables or for installation on medium and high voltage bushings. All of these enables a space-saving system design. Primary currents of up to 5000 A can be measured.

A specific core padding and the complete casting of all active parts in polyurethane (PUR) ensures that the magnetic properties, and therefore, the class accuracy remain constant for decades.

The standard secondary terminal enclosure permits a housing degree of protection up to IP 20. Optionally, secondary terminals can be integrated in to a terminal box, providing a housing degree of protection of up to IP 65. Thanks to a wide range of geometric dimensions, the cable current transformer can be adapted to customer requirements. Applicable installation options are also available in various designs and any installation position.

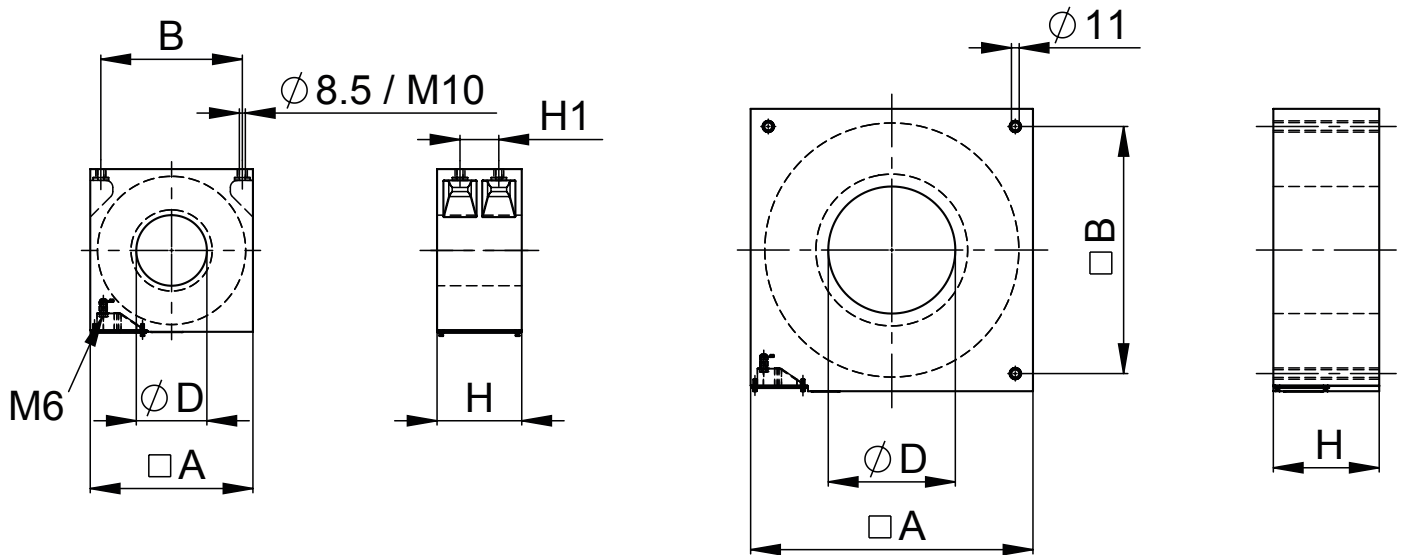
The transformers are designed according to applicable national and international standards. In addition, designs that meet customer-specific standards are possible on request.



## Advantages JK

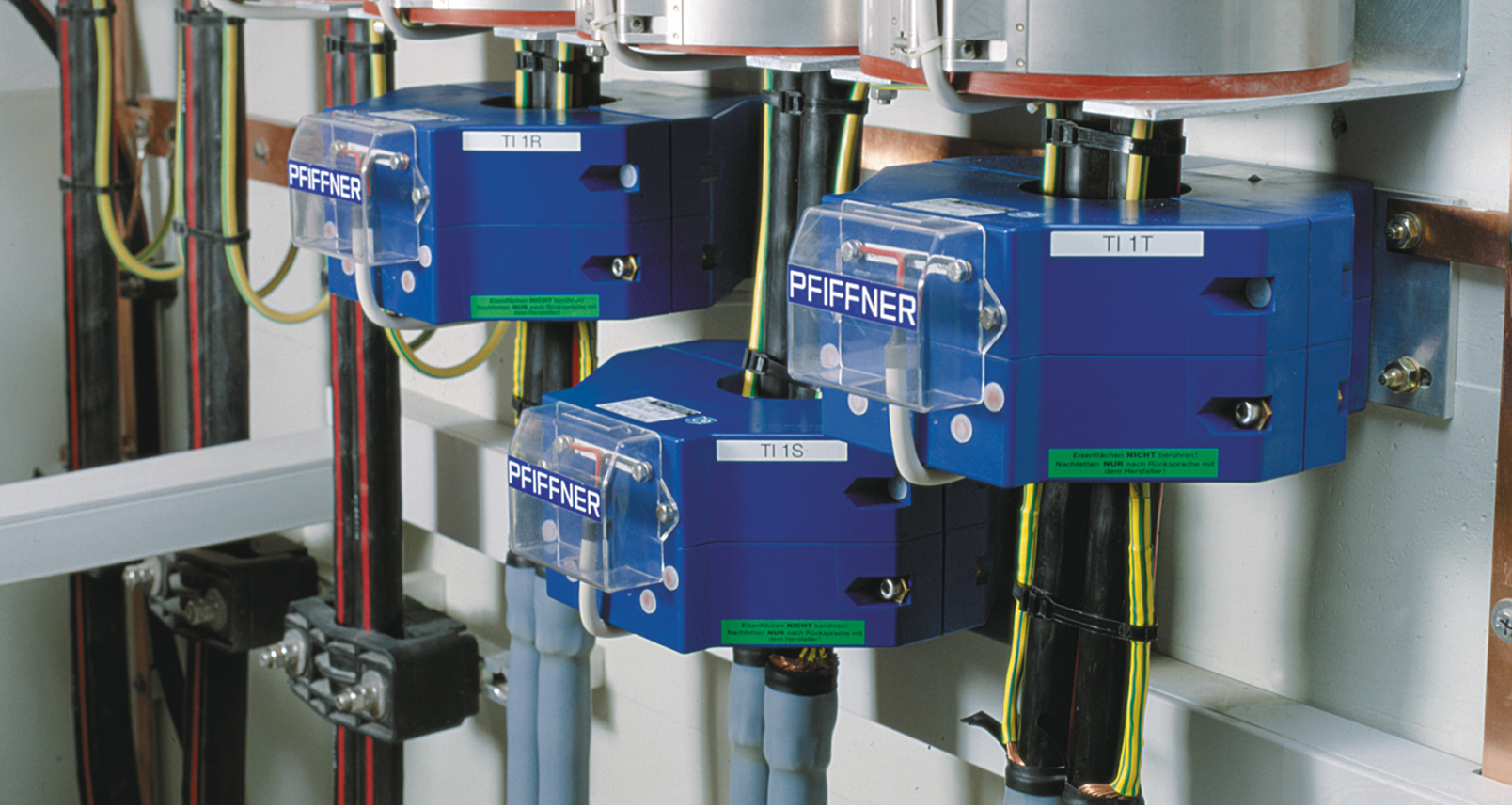
- Constant class accuracy
- Rated primary currents up to 5000 A
- Suitable for installation over fully insulated HV and MV cables
- Suitable for indoor applications with degree of protection IP 20 or IP 65
- Wide range of geometric dimensions
- Any installation position

# Current transformers JK



Type JK		
Standard		DIN/IEC/IEEE
Highest voltage for equipment	kV	0.72
Rated power-frequency withstand voltage	kV	3
Frequency	Hz	16.7/50/60
Primary rated current	A	1–5000
Secondary rated current	A	1/5
Rated short-time thermal current [I <sub>th</sub> ]	kA/1s	100 x I <sub>n</sub>
Rated dynamic current [I <sub>dyn</sub> ]	kA	2.5 x I <sub>th</sub>
Accuracy class		0.1–3; 0.2S; 0.5S; P; PR; PX; PXR; TPX; TPY; TPZ
Max. number of cores		5

Type JK						
Transformer size	A	mm	230	350	400	450
Height of unit	H	mm	80–180	80–300	100–300	100–300
Internal diameter	D	mm	50–180	60–250	100–290	100–290
Distance between screw holes at base	B	mm	200	300	350	400

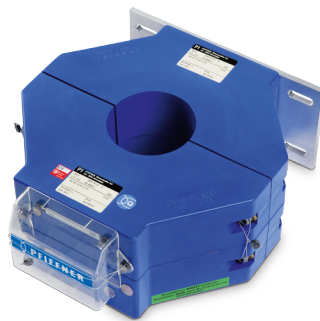


# Current transformers JKS / JKS-S

Split core cable current transformers of type JKS / JKS-S are used in indoor switch-gear. They transform high currents up to 3000A into standardised values for meters, measuring and protection devices.

The split core cable current transformer is designed for subsequent installation on fully insulated medium and high voltage cables. This enables retrofitting of existing systems simply. Primary currents of up to 3000A can be measured.

A specific core padding ensures that the magnetic properties and class accuracy remain constant for decades. The active part is cast in polyurethane (PUR). Type JKS transformers come with a housing degree of protection up to IP 20; type JKS-S transformers up to IP 40. Thanks to a wide range of geometric dimensions, the cable current transformer can be adapted to customer requirements. Any installation position is usually possible.



## Advantages JKS-S

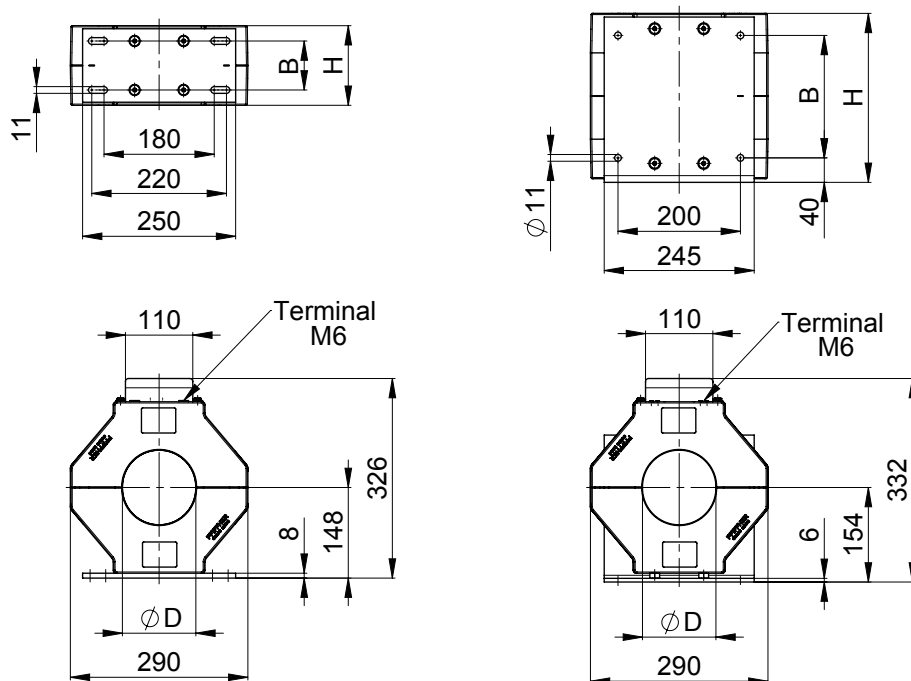
- Suitable for subsequent installation over fully insulated HV and MV cables
- Suitable for indoor applications with degree of protection IP 20, on request IP 40
- Wide range of geometric dimensions
- Secondary terminals for cables up to max. diameter of 6 mm<sup>2</sup>

## Advantages JKS

- Suitable for subsequent installation over fully insulated HV and MV cables
- Suitable for indoor applications with degree of protection IP 20, on request IP 40
- Wide range of geometric dimensions
- Secondary terminals for cables up to max. diameter of 6 mm<sup>2</sup>
- Particularly suitable for special classes or very high output levels

# Current transformers JKS / JKS-S

JKS-S



## Type JKS / JKS-S

Standard		DIN/IEC/IEEE
Highest voltage for equipment	kV	0.72
Rated power-frequency withstand voltage	kV	3
Frequency	Hz	16.7/50/60
Primary rated current	A	1–3000
Secondary rated current	A	1/5
Rated short-time thermal current [I <sub>th</sub> ]	kA/1s	100 x I <sub>n</sub>
Rated dynamic current [I <sub>dyn</sub> ]	kA	2.5 x I <sub>th</sub>
Accuracy class		0.1–3; 0.2S; 0.5S; P; PR; PX; PXR; TPX; TPY
Max. number of cores		2

## Type JKS-S

Height of unit	H	mm	130	200	270
Fastening dimension	B	mm	80	150	200
Diameter	D	mm	90 / 120 / 150	90 / 120 / 150	90 / 120 / 150



# Current transformers JKF

Type JKF cable current transformers are used in outdoor switchgear. They transform high currents up to 4000 A into standardised values for meters, measuring and protection devices.

The outdoor version of the cable current transformer is designed for installation on fully insulated medium and high voltage cables or installation on medium and high voltage bushings. This enables space-saving system design. In addition, primary currents of up to 4000 A can be measured.

A specific core padding and the complete casting of all active parts in cycloaliphatic epoxy resin suitable for outdoor applications ensures that the magnetic properties, and therefore, the class accuracy remain constant for decades.

The standard secondary terminal box permits a housing degree of protection up to IP 65.

Thanks to a wide range of geometric dimensions the cable current transformer can be adapted to customer requirements. Applicable installation options are also available in various designs. Any type of installation position can be realised.

The transformers are designed according to applicable national and international standards. Designs meeting customer-specific standards are generally possible.

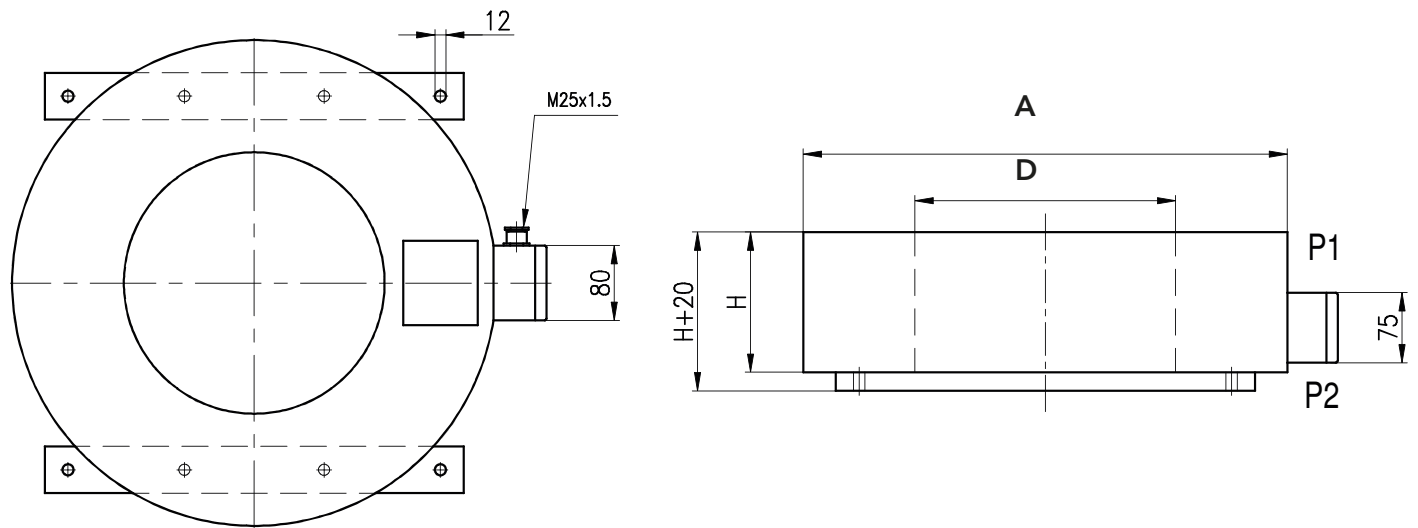


## Advantages JKF

- Suitable for installation over fully insulated HV and MV cables
- Suitable for installation on bushings
- Suitable for indoor and outdoor applications with degree of protection IP 20, IP 40 or IP 65
- Wide range of geometric dimensions
- Any installation position

# Current transformers JKF

Example dimensional picture



Type JKF		
Standard		DIN/IEC/IEEE
Highest voltage for equipment	kV	0.72
Rated power-frequency withstand voltage	kV	3
Frequency	Hz	16.7/50/60
Primary rated current	A	1–4000
Secondary rated current	A	1/5
Rated short-time thermal current [I <sub>th</sub> ]	kA/1s	100 x I <sub>n</sub>
Rated dynamic current [I <sub>dyn</sub> ]	kA	2.5 x I <sub>th</sub>
Accuracy class		0.1–3; 0.2S; 0.5S; P; PR; PX; PXR; TPX; TPY; TPZ
Max. number of cores		5

Type JKF		
Height of unit	H mm	max. 350
Internal diameter	D mm	160–1200
External diameter	A mm	400–1400

other dimensions on request



# Current transformers JK-G / JKS-G

Cable current transformers of type JK-G/JKS-G are used in outdoor applications for medium or high voltage systems. They are mounted over the high or medium voltage cable and transform currents up to 3000 A into standardised values for meters, measuring and protection tasks.

The cable provides insulation against high voltage in this transformer type and also represents the primary winding of the current transformer. The current transformer itself is installed on a frame or cross-member over the cable.

The active parts are cast in a polyurethane resin protected by an aluminium housing. The split core current transformers are opened and closed with M8 screws located on the sides.

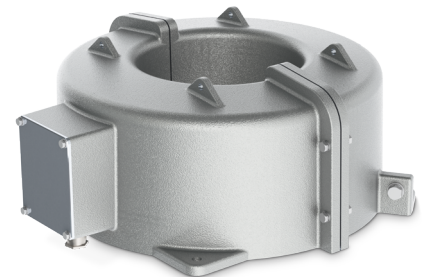
The secondary terminals are routed in a terminal box to M6 cast sockets. The connection to the secondary circuit can be realised with appropriately sized cable lugs.

## Type JK-G

The type JK-G current transformer is a single unit. Up to 4 cores are possible, depending on the type. An IP 65 degree of protection is achieved here. With regards to installation, only vertical mounting with  $\pm 60^\circ$  deviation for reasons of outdoor reliability.

## Type JKS-G

The type JKS-G current transformer has a split core. Maximum of two cores possible, dependent on the translation and class. An IP 53 degree of protection is achieved here. Regarding to installation, only vertical mounting with  $\pm 30^\circ$  deviation for reasons of outdoor reliability.

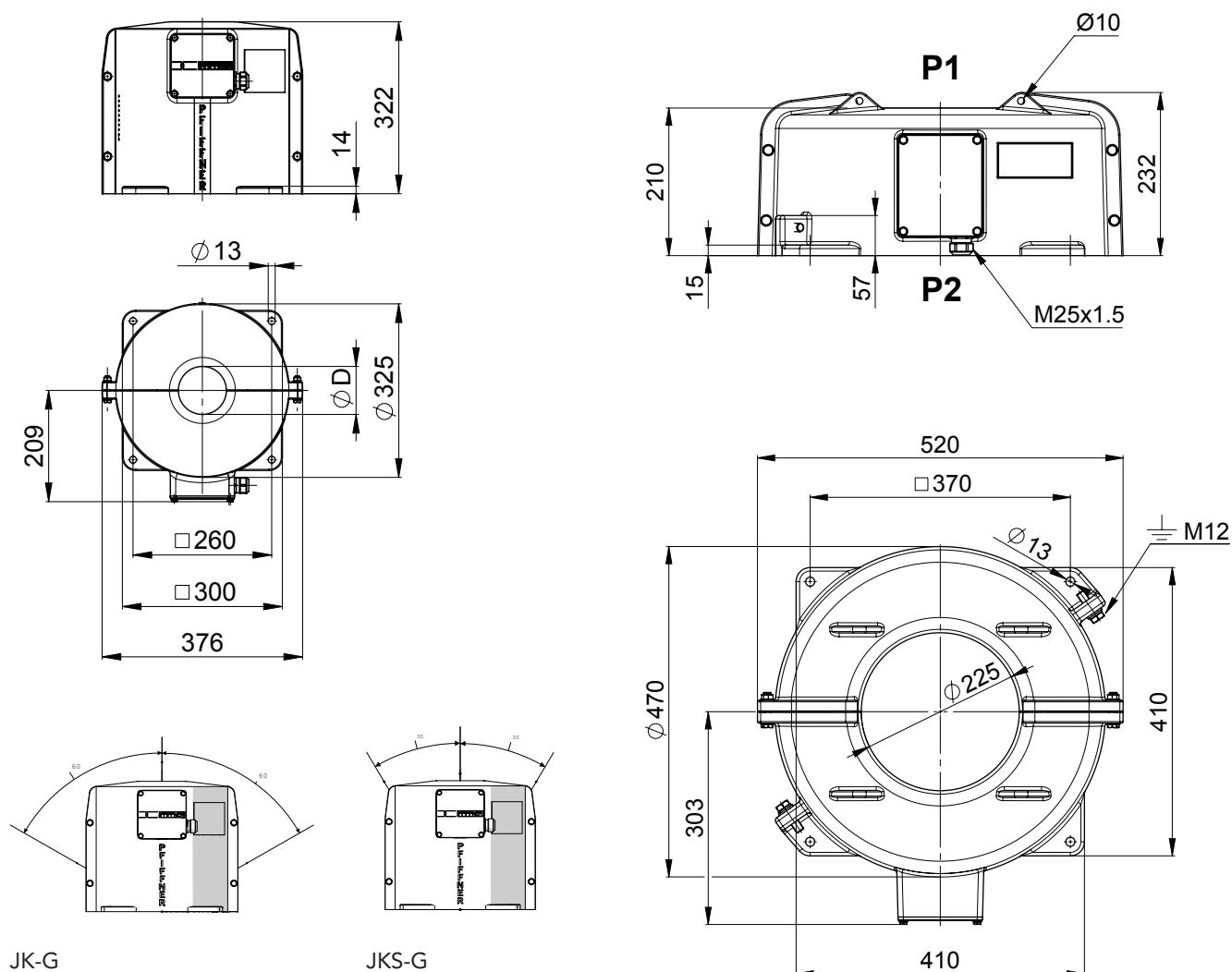


## Advantages JK-G (JKS-G)

- Suitable for subsequent installation over the cable in outdoor switchgear
- Degree of protection possible up to IP 65 (IP 53)
- Primary currents possible up to 3000 A
- Suitable for up to 4 (2) current transformer cores, dependent on translation and class
- 4 different transformer hole diameters: 85 mm, 115 mm, 145 mm and 225 mm



# Current transformers JK-G / JKS-G



## Type JK-G / JKS-G

Standard		DIN/IEC/IEEE
Highest voltage for equipment	kV	0.72
Rated power-frequency withstand voltage	kV	3
Frequency	Hz	16.7/50/60
Primary rated current	A	1–3000
Secondary rated current	A	1/5
Rated short-time thermal current [I <sub>th</sub> ]	kA/1s	100 x I <sub>n</sub>
Rated dynamic current [I <sub>dyn</sub> ]	kA	2.5 x I <sub>th</sub>
Accuracy class		0.1–3; 0.2S; 0.5S; P; PR; PX; PXR; TPX; TPY

Type	JK-G	JKS-G
Diameter	mm	85 / 115 / 145 / 225



## Current transformers JLD (12–170) kV

Bar current transformers of type JLD are used in indoor and outdoor applications for medium or high voltage systems. They transform currents up to 5000 A into standardised values for meters, measuring and protection devices.

Bar current transformers are typically used in wall, floor or ceiling openings. They consist mainly of a wall bushing and the coupled current transformer part. The wall bushing provides insulation against high voltage and represents the current transformer's primary winding. Up to 5 cores can be included in the current transformer part. Degrees of protection can optionally be provided between IP 20 and IP 65.

Bar current transformers of type JLD can be designed for outdoor/outdoor, outdoor/indoor and indoor/indoor applications. The corresponding wall bushing and insulation type of the current transformer part must be appropriately selected. A silicone-shielded wall bushing with a current transformer part cast in outdoor-resistant casting resin is used for outdoor applications.

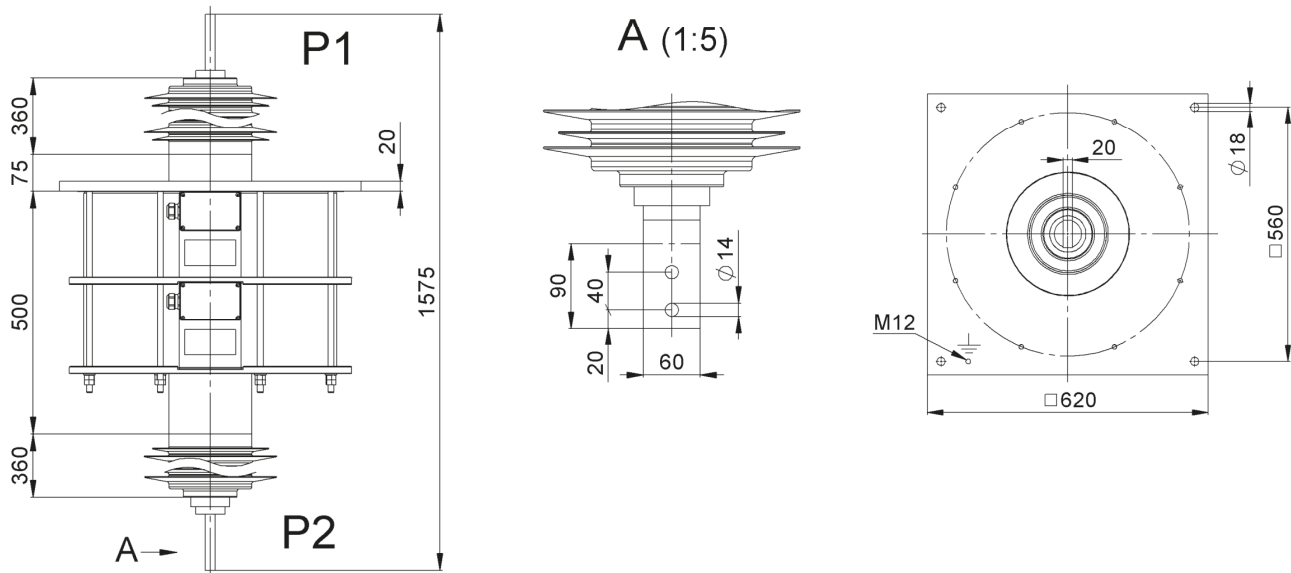
The current transformer parts are cast in polyurethane (PUR) for indoor applications. A unique core padding ensures that thermal compression stresses do not affect the magnetic properties. This allows the class accuracy to remain constant over decades.



### Advantages JLD (12–170) kV

- Suitable for installation, floor and ceiling openings
- Suitable for indoor or outdoor applications with a degree of protection up to IP 65
- Primary currents possible up to 5000 A
- Low space requirements for installation possible in wall openings
- Up to 5 cores are possible
- High short circuit current values possible

# Current transformers JLD (12–170) kV



Type JLD		12	24	36	72	123	145	170
Standard		DIN/IEC/IEEE						
Highest voltage for equipment	kV	12	24	36	72.5	123	145	170
Rated power-frequency withstand voltage	kV		50	70	140	230	275	325
Rated lightning impulse withstand voltage	kV		125	170	325	550	650	750
Frequency	Hz	16.7/50/60						
Primary rated current	A	1–5000						
Secondary rated current	A	1/5						
Rated short-time thermal current [I <sub>th</sub> ]	kA/1s	100 x I <sub>n</sub>						
Rated dynamic current [I <sub>dyn</sub> ]	kA	2.5 x I <sub>th</sub>						
Accuracy class		0.1–3; 0.2S; 0.5S; P; PR; PX; PXR; TPX; TPY; TPZ						
Max. number of cores		5						

# Global presence

[www.pfiffner-group.com](http://www.pfiffner-group.com)

## **PFIFFNER Instr. Transformers Ltd**

Lindenplatz 17  
5042 Hirschthal / Switzerland

sales@pmw.ch  
+ 41 62 739 28 28

## **PFIFFNER Systems Ltd**

Lerchenweg 21  
4303 Kaiseraugst / Switzerland

info@pfiffner.systems.com  
+41 61 467 61 06

## **PFIFFNER Deutschland GmbH**

Zusesterstrasse 6  
25524 Itzehoe / Germany

sales@pfiffner-messwandler.de  
+49 4821 40827 0

---

## **PFIFFNER Transformatör A.S.**

Akyurt  
06750 Ankara-Çankiri yolu 7.km /  
Turkey

satis@pfiffner.com.tr  
+90 31 284 755 21

## **PFIFFNER do Brasil Ltda**

Alvaro Beraldi Avenue, 181  
88307-740 Itajai  
State/province: Santa Catarina /  
Brazil

pfiffner@pfiffner.com.br  
+55 (47) 334 817 00

## **PFIFFNER Instr. Tranf. Pvt Ltd**

176, 178/2 Sarul, Vilholi  
Nashik: 422 010 / India

contact@pfiffner.in  
+91 253 297 8227

---

## **ALPHA Elektrotechnik Ltd**

Niklaus Wengi-Strasse 64  
2540 Grenchen / Switzerland

mail@alpha-et.ch  
+41 32 332 87 00

## **HAEFELY Ltd**

Birsstrasse 300  
4052 Basel / Switzerland

sales@haefely.com  
+41 61 373 41 11

## **HAVECO Ltd**

Schorenstrasse 48  
3645 Gwatt b. Thun / Switzerland

info@haveco.com  
+41 33 335 75 00

---

## **MOSER GLASER Ltd**

Lerchenweg 21  
4303 Kaiseraugst / Switzerland

info@mgc.ch  
+41 61 467 61 11

## **MGC Moser-Glaser Inc.**

621 Ridgely Ave, Suite 305  
Annapolis, MD 21401 / USA

sales-usa@moserlaser.com  
+1 224 716 2028

This document has been drawn up with the utmost care. We cannot, however, guarantee that it is entirely complete, correct or up-to-date.  
Copyright PFIFFNER / Subject to change without notice 2022.08



Current and voltage – our passion

