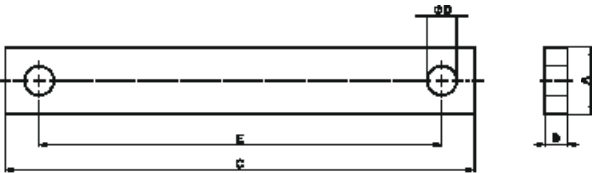
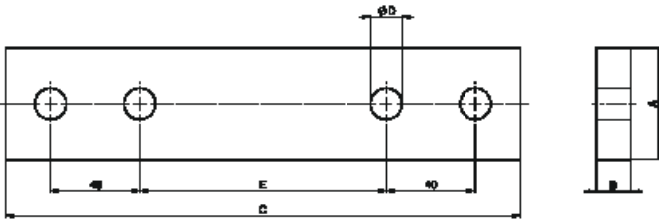




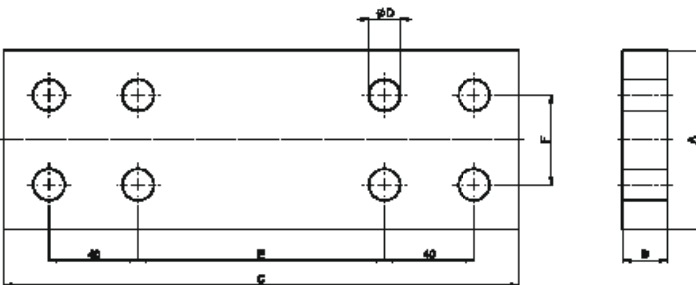
TSC2, TSC4, TGH1.01, TGH1.02, TGC1.01, TGC1.02



TSC5, TSC6, TGC3, TGE1, TGK1



TSC8, TGE3, TGF1



Typ	A	B	C	D	E	F
TSC 2 <sup>1)</sup>	30	10	130	11	100	
TSC 4 <sup>1)</sup>	40	12	150	14	110	
TSC 4 <sup>2)</sup>	40	12	150	14	110	
TGH1.01 <sup>2)</sup>	30	10	140	13	110	
TGH1.02 <sup>2)</sup>	30	10	210	13	180	
TGC1.01 <sup>2)</sup>	40	6	155	13	127	
TGC1.02 <sup>2)</sup>	40	6	220	17	180	

Typ	A	B	C	D	E	F
TSC 5 <sup>1)</sup>	50	15	230	14	110	
TSC 6 <sup>1)</sup>	60	15	230	14	110	
TGC3 <sup>2)</sup>	50	8	210	18	160	
TGK 1 <sup>2)</sup>	50	15	244	18	124	
TGE 1 <sup>2)</sup>	60	15	244	18	124	

Typ	A	B	C	D	E	F
TSC 8 <sup>1)</sup>	80	20	230	14	110	40
TGE 3 <sup>2)</sup>	80	15	244	18	124	40
TGF 1 <sup>2)</sup>	100	20	270	18	150	50

<sup>1)</sup> Cu blank / blank / nu

<sup>2)</sup> Cu vernickelt / nickel plated / nickelé

This document has been drawn up with the utmost care. We cannot, however, guarantee that it is entirely complete, correct or up-to-date.

© Copyright PFIFFNER / Subject to change without notice. 2016.02



Current and voltage – our passion

PFIFFNER  
Messwandler AG

5042 Hirschthal / Suisse  
www.pfiffner-group.com

HV HIGH VOLTAGE

MV MEDIUM VOLTAGE

LV LOW VOLTAGE

HS HOCHSPANNUNG

MS MITTELSPANNUNG

NS NIEDERSPANNUNG