

Spannungswandler Voltage transformer Transformateur de tension ELP 0.5 - 1.5

- Vergossen in Polyurethan, kompakte Ausführung
- Tropenfest
- Zugelassen für amtliche Eichung
- Moulded in Polyurethane, compact design
- Tropic-proof
- Approved for official calibration
- Coulé dans le Polyurethane, exécution compacte
- Résistant aux climats tropicaux
- Autorisé pour étalonnage officiel

Technische Daten

| | |
|--------------------------|-------------|
| Höchste Betriebsspannung | 0.72 kV |
| Prüfspannung | 3.0 kV |
| Frequenz | 50/60 Hz |
| Primärspannung | 48.....720V |
| Sekundärspannung | 7.....380V |

Technical data

| | |
|---------------------------|--------------|
| Highest operating voltage | 0.72 kV |
| Test voltage | 3.0 kV |
| Frequency | 50/60 Hz |
| Primary voltage | 48.....720 V |
| Secondary voltage | 7.....380 V |

Spécifications

| | |
|-----------------------------|--------------|
| Tension de service maximale | 0.72 kV |
| Tension d'essai | 3.0 kV |
| Fréquence | 50/60 Hz |
| Tension primaire | 48.....720 V |
| Tension secondaire | 7.....380 V |

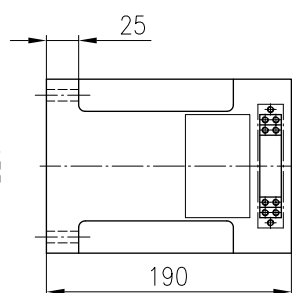
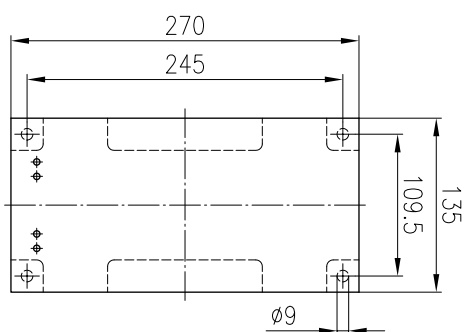
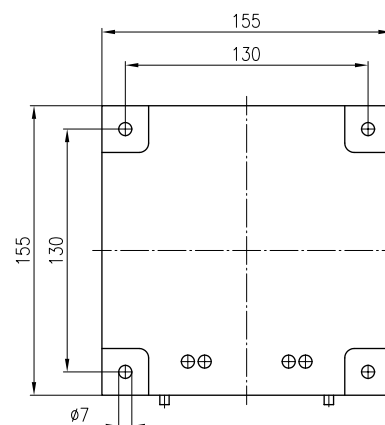
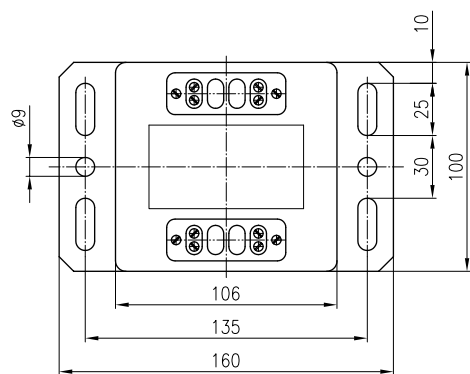
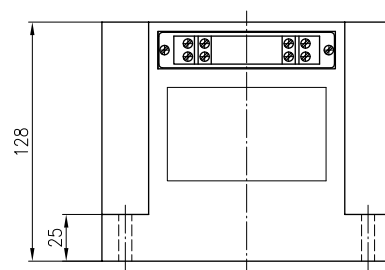
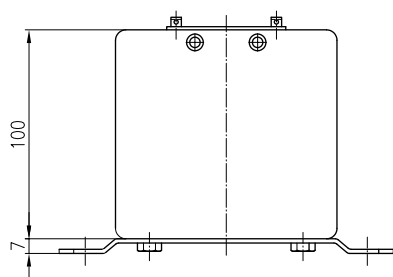


Current and voltage – our passion

PFIFFNER
Messwandler AG

5042 Hirschthal / Suisse
www.pfiffner-group.com





| Typ/Type/Type | cl. 0.2 VA | cl. 0.5 VA | cl. 1 VA | cl. 3 VA | Wicklungen/ Windings/ Enroulements | Beispiele/ Examples/ Exemples |
|---------------|---------------|---------------|-------------|-------------|--|-------------------------------------|
| ELP 0.5 | 2 | 5 | 10 | 20 | 2 | 500 V/110 V |
| ELP 1.0 | – | 15 | 30 | 60 | max. 3 | 500 V/110–100 V |
| ELP 1.5 | 15 | 30 | 60 | 90 | max. 4 | 500–380 V/110–100 V |