



- Kabelstromwandler für Schutz-Zwecke
- vergossen in Polyurethan
  
- Cable current transformer for protection purposes
- Moulded in Polyurethane
  
- Transformateur de câble pour la protection
- Coulé dans le Polyurethane

#### Technische Daten

|                           |                       |
|---------------------------|-----------------------|
| Höchste Betriebsspannung  | 0.72 kV               |
| Prüfspannung              | 3.0 kV                |
| Frequenz                  | 50/60 Hz              |
| Sekundärstrom             | 1 A                   |
| Thermischer Dauerstrom    | 120% I <sub>pr</sub>  |
| Thermischer Kurzzeitstrom | 60 I <sub>pr</sub> 1s |

#### Technical data

|                            |                       |
|----------------------------|-----------------------|
| Highest operating voltage  | 0.72 kV               |
| Test voltage               | 3.0 kV                |
| Frequency                  | 50/60 Hz              |
| Secondary current          | 1 A                   |
| Continuous thermal current | 120% I <sub>pr</sub>  |
| Short-time thermal current | 60 I <sub>pr</sub> 1s |

#### Spécifications

|                                    |                       |
|------------------------------------|-----------------------|
| Tension de service maximale        | 0.72 kV               |
| Tension d'essai                    | 3.0 kV                |
| Fréquence                          | 50/60 Hz              |
| Courant secondaire                 | 1 A                   |
| Courant thermique continu          | 120% I <sub>pr</sub>  |
| Courant de court-circuit thermique | 60 I <sub>pr</sub> 1s |

#### PIFFNER Messwandler AG

Lindenplatz 17  
5042 Hirschthal/Schweiz

Telefon +41 (0)62 739 28 28

Telefax +41 (0)62 739 28 10

E-Mail sales@pmw.ch

Internet www.pmw.ch



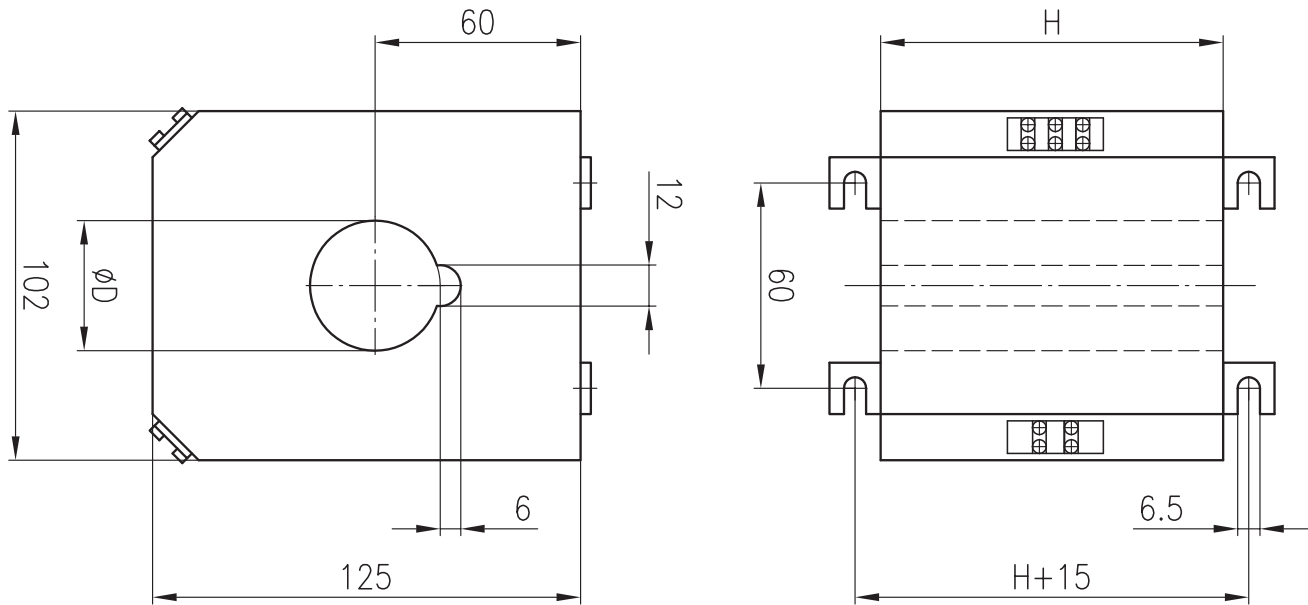
HOCHSPANNUNG | HIGH VOLTAGE

MITTELSPANNUNG | MEDIUM VOLTAGE

NIEDERSPANNUNG | LOW VOLTAGE

Durchsteck-Stromwandler  
 Transformateur de courant à trou  
 Bus-bar-type CT

TGE 4



| I <sub>pr</sub> | 10P10   | 5P10   | cl. 1  | D Ø mm | H      |
|-----------------|---------|--------|--------|--------|--------|
| 10/1A*          | P10 1VA |        |        | 38 mm  | 100 mm |
| 20/1A           | 1 VA    |        |        | 38 mm  | 100 mm |
| 30/1A           | 1.5 VA  |        |        | 38 mm  | 100 mm |
| 40/1A           | 1.5 VA  |        |        | 38 mm  | 100 mm |
| 50/1A           |         | 2.5 VA |        | 38 mm  | 100 mm |
| 60/1A           | 2 VA    |        | 2.5 VA | 38 mm  | 100 mm |
| 75/1A           |         | 2 VA   |        | 38 mm  | 100 mm |
| 90/1A           | 1.5 VA  |        |        | 38 mm  | 100 mm |
| 200/1A          | 1.5 VA  | 1.5 VA |        | 45 mm  | 60 mm  |
| 270/1A          | 1.5 VA  |        |        | 60 mm  | 60 mm  |
| 300/1A          |         | 2.5 VA |        | 45 mm  | 60 mm  |
| 25-50/1A        | 1-2 VA  |        |        | 38 mm  | 100 mm |
| 30-60/1A        | 1-2 VA  |        |        | 38 mm  | 100 mm |
| 50-100/1A       |         | 1-2 VA | 1-2 VA | 38 mm  | 100 mm |
| 100-200/1A      |         | 1-2 VA |        | 45 mm  | 60 mm  |
| 150-300/1A      |         | 1-2 VA | 2-4 VA | 45 mm  | 60 mm  |
| 200-400/1A      |         | 1-2 VA |        | 45 mm  | 60 mm  |
| 300-600/1A      | 3-6 VA  |        |        | 45 mm  | 60 mm  |

\* 2 Wandler / 2 units / 2 pièces

**Befestigungsfuss:** in der Lieferung inbegriffen

**Fastening foot:** part of delivery

**Support de fixation:** compris dans la livraison



HOCHSPANNUNG | HIGH VOLTAGE

MITTELSPANNUNG | MEDIUM VOLTAGE

NIEDERSPANNUNG | LOW VOLTAGE